

Back row: D. Zollver, R. Karnitz, R. Schultz, M. Frisinger, J. Christenson, B. Kallenback, N. Dorsey, C. Wolk, R. Koser, D. Thorbeck, W. Hansen, L. Akenson.
 Row two: D. Hembre, R. Weeks, P. Scheerer, D. Larson, O. Faanes, D. Peterson, H. Hill, J. Swanson, R. Ostenson, C. Darrah, H. Schindler, R. Ritchie, L. Akenson, D. Prine.
 Row one: D. Ormson, B. Kurschner, H. Rogers, N. Schiel, D. Hepker, D. Thorsbakken, L. Etlicker, P. Fornell, E. Schmidt, C. Graves, C. Nicklow.

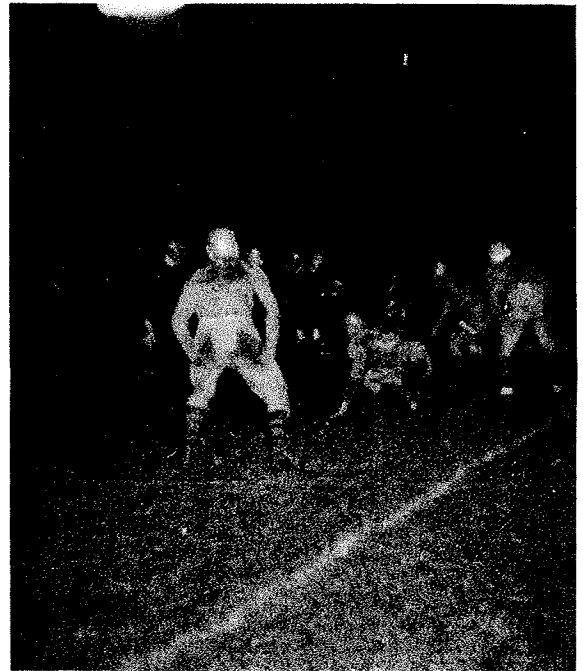
We Praise Thy Name Oh Barron High



Back row: D. Bilse, J. Schmidt, R. Nelson, A. Norby, G. Thompson, N. Taft, J. Taylor, G. Lilly, L. Etlicker, D. Dodge, W. Murray, A. Perkrul.
 Row two: R. Turgeson, R. Olson, A. Handle, H. Schanwald, E. Balko, J. Carlson, R. Zollver, A. Clement, M. Olson, B. Stokes, R. McDonald, L. Hanson, A. Erickson, R. Heffner.
 Row one: H. Blake, M. Nevin, D. Deruso, H. Hinzman, D. Berger, G. Gropp, D. Williams, N. Kuchenmeister, H. Beiswanger, R. L. Olson, L. Etlicker.



Homecoming Bonfire



Bloomer Game

Maroon and Gold Our Colors Proudly Fly

SEASON'S RECORD

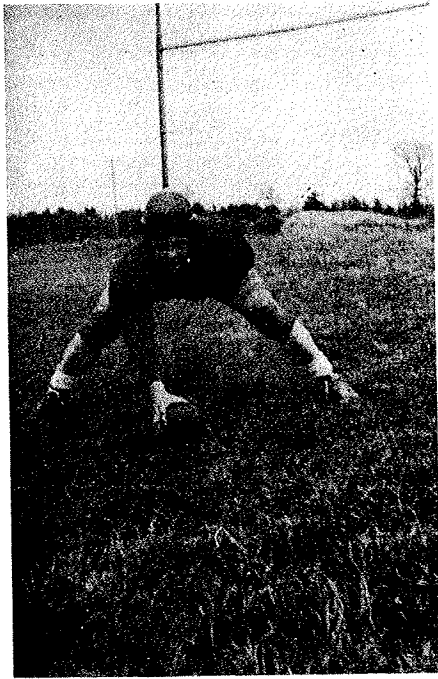
The 1946 football season was opened on Spooner's gridiron, September 27. Although the Bears were inexperienced, the Railroaders were unable to score until the fourth period, making it 6-0 in their favor.

On October 4 the Bears traveled to Bloomer for their second game which was a close match in the first half with each team scoring. The Warhawks scored a second touchdown in the last five minutes, defeating the Bears 6-3.

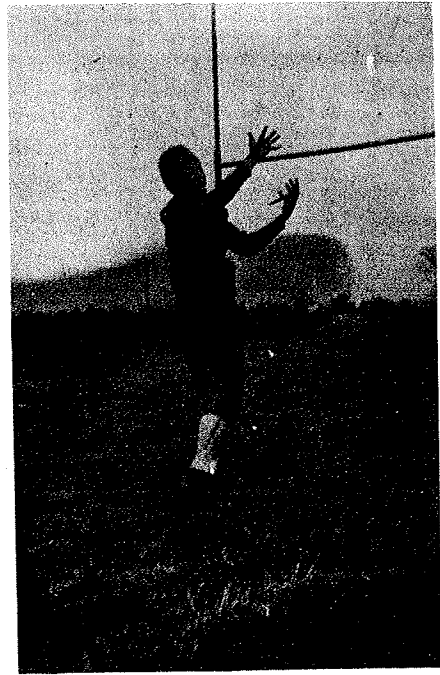
The game which was to be played November 11, with Rice Lake was canceled because of the polio epidemic. Don Zollver, Darold Hepker, Don Olson, and Wayne Hansen, members of the squad, having been afflicted with the disease, all remaining games were canceled and the football season was closed.

In the Ladysmith game, both teams threatened during the first quarter, but in the second quarter the Lumberjacks scored a touchdown making the score 7-0. In the third and fourth quarters both teams scored, giving the Lumberjacks the victory over the Bears 14-13.

Barron's one victory of the season was gained in a close game with Cumberland, October 25. The Beavers had a 6 to 0 lead until the last two minutes of the fourth quarter when two passes were completed to Darrah, and he pushed his way into the end zone. Swanson kicked the extra point to cinch the victory over Cumberland.



Nyles Ellefson
Center



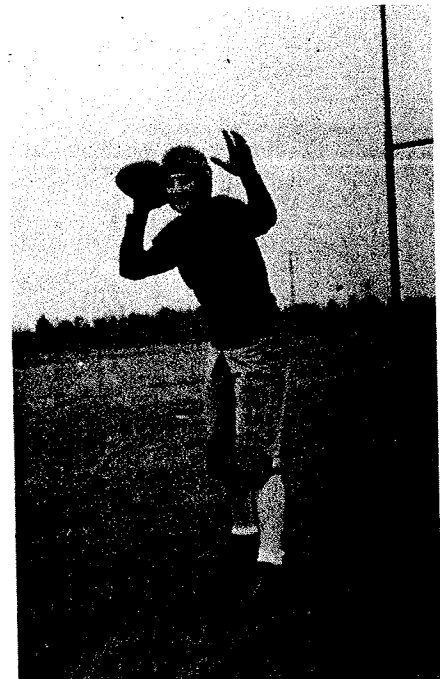
Clyde Nicklow
End



Byron Kurschner
Tackle



Norman Schiel
Tackle



Carl Darrah
Left Half

COACHES

Mr. Leikvoll

Mr. Warwick

Mr. Switzenberg



OUR LOYAL BACKERS

FOOTBALL MANAGERS



Jack Krahenbuhl

Jack Edson

Clyde Kunze

BASKETBALL MANAGERS

Harold Barnett

Coach Warwick

Clyde Kunze

