



Welcome!

Community Focus Group #3

Friday - 08.21.2020



August Summer Camp Kindness



OBJECTIVE





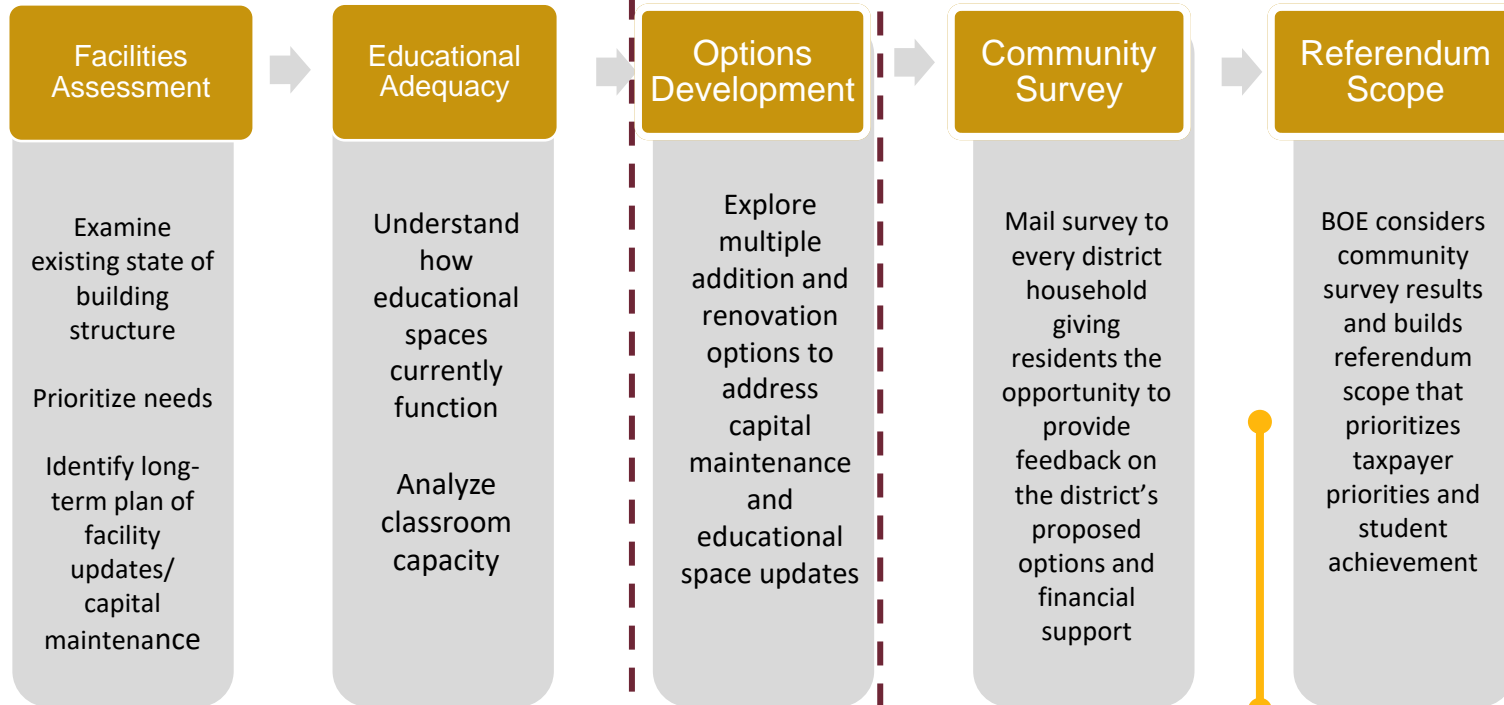
Meeting Goals

- Recap Focus Group #2
 - Address outstanding items
 - Competition gym layouts/seating
 - Locker room
 - Daycare
- Review Updated Plans & Cost
- Financing 101
- Discuss Survey Process
- Next Steps



Master Planning Process

★ We Are Here



Meeting #1

Meeting #2

Meeting #3



Referendum decision made:
Go or No Go





FOCUS GROUP FEEDBACK

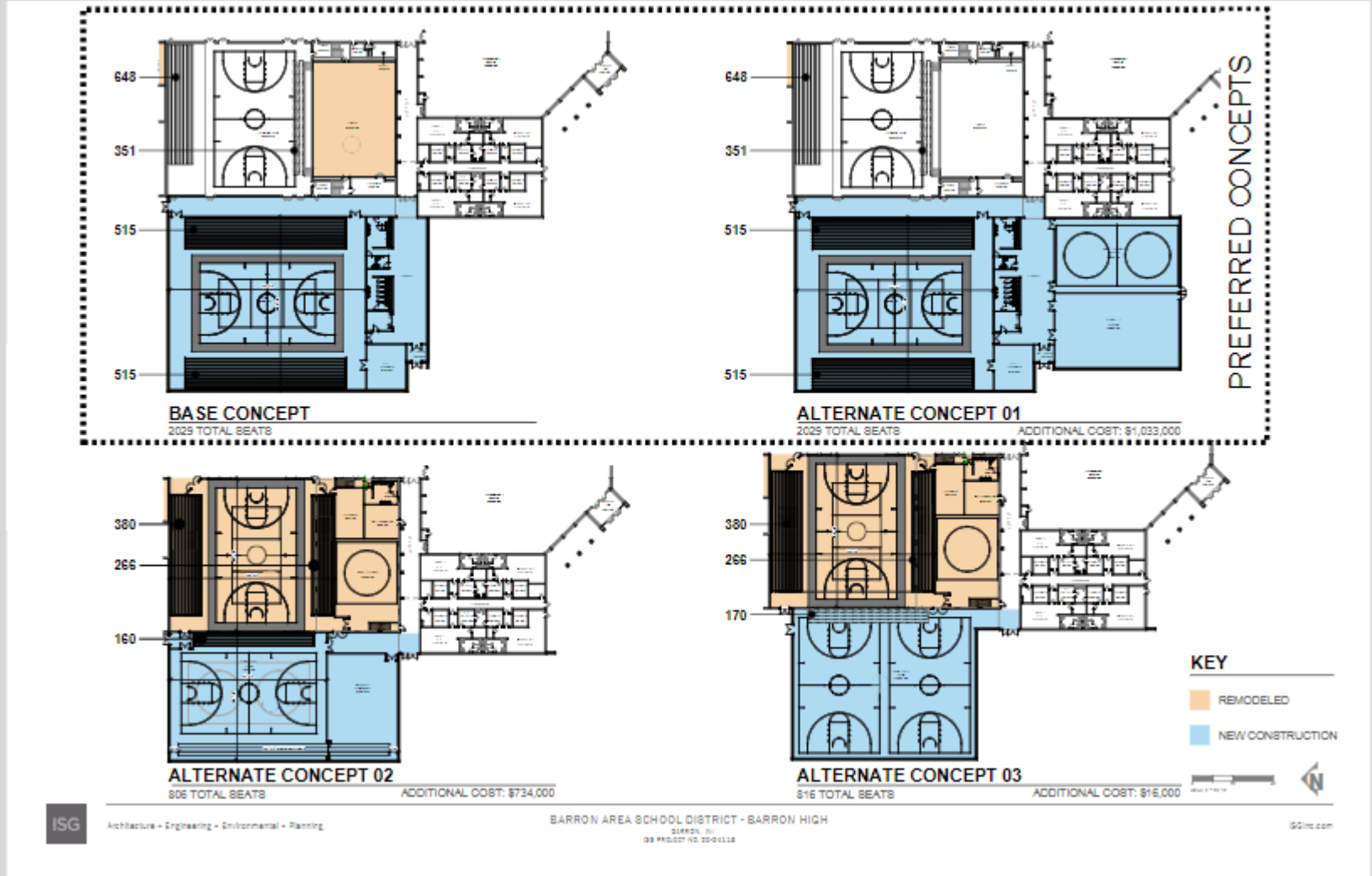


Your Feedback

- Woodland Daycare – **82% support**
- Riverview Fitness Addition – **35% support**
- Gym Functionality
 - Option #1 – **65% support**
 - Option #2 – **6% support**
 - Option #3 – **12% support**

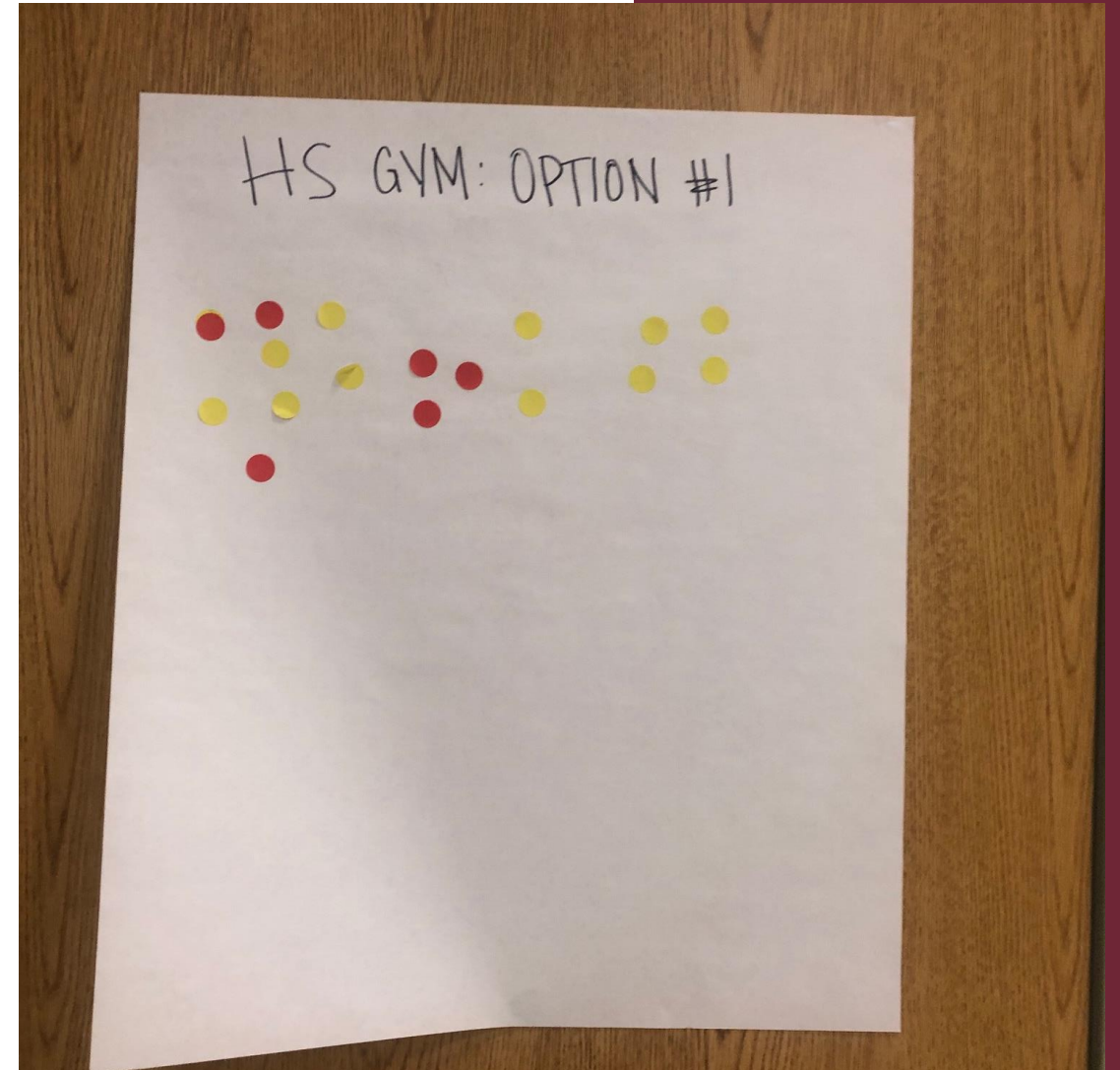


Gym Layout Considerations

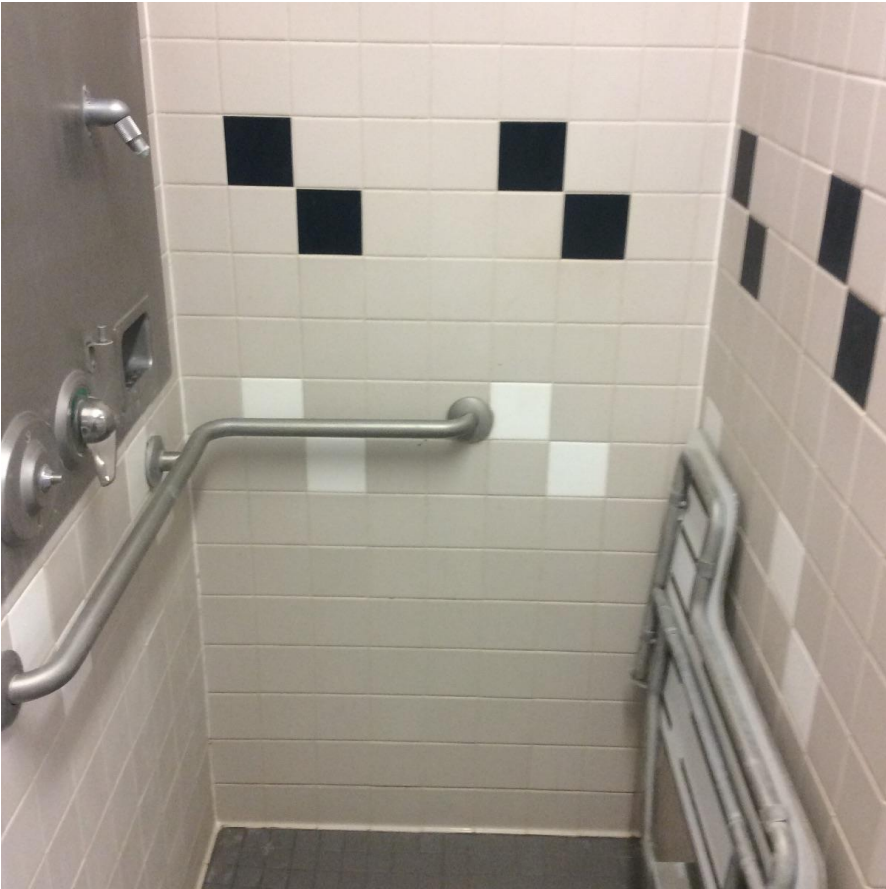


LET'S HEAR FROM YOU...AGAIN!

- Base Plan Gym – no additional cost
 - Completion gym: 2029 seats
 - Lobby
 - Restroom
- Alternate Option #1: +\$1,033,000
 - Completion gym: 2029 seats
 - Wrestling room
 - Fitness center
 - Lobby
 - Restroom



Locker Room



Daycare





UPDATED PLANS & COST



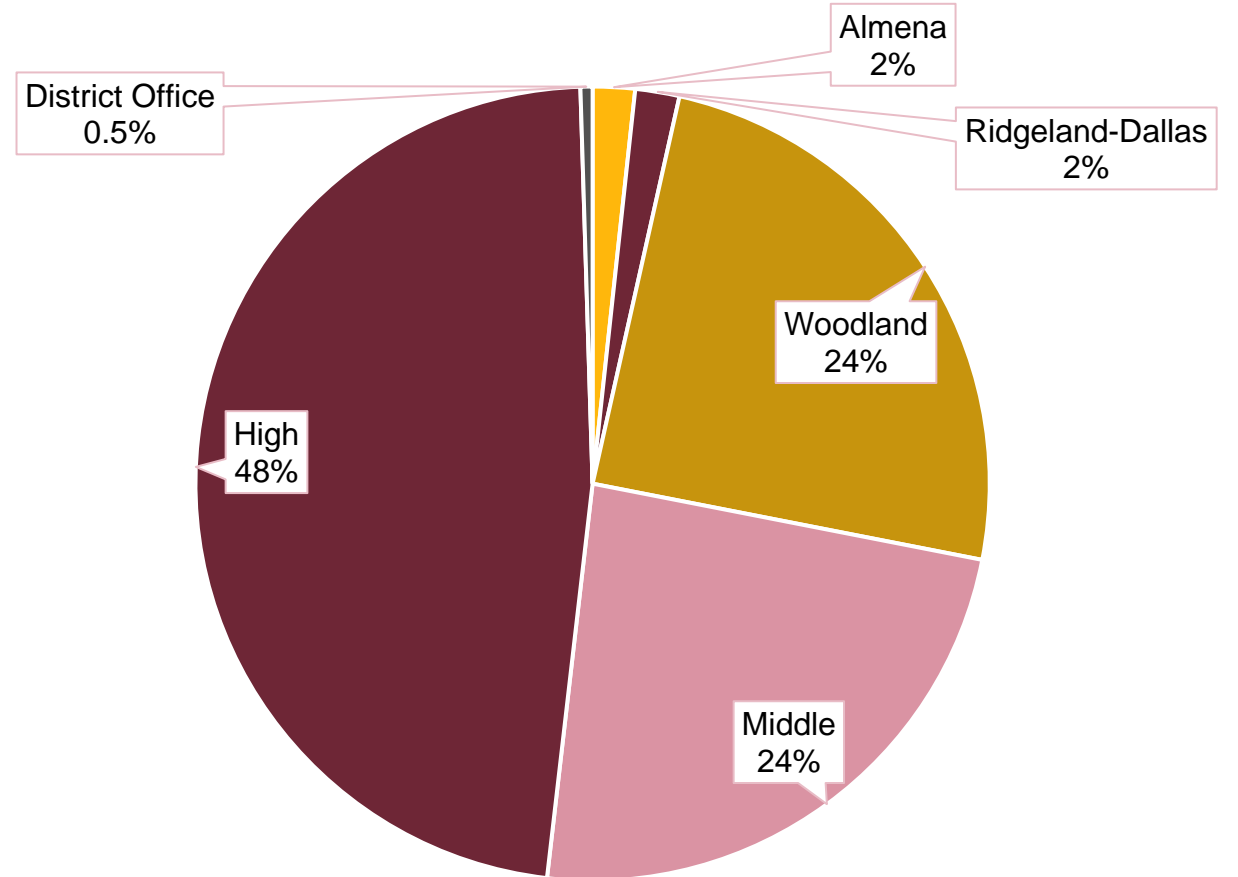
TRANSITION TO PDF OF PLANS



Base Plan Project Cost

School	Investment
Almena Elementary	\$525,000
Ridgeland-Dallas	\$550,000
Woodland Elementary	\$7,510,000
Riverview Middle School	\$7,265,000
Barron High School	\$14,579,000
District Office	\$150,000
Total	\$30,580,000

Base Plan Investment



■ Almena
 ■ Ridgeland-Dallas
 ■ Woodland
 ■ Middle
 ■ High
 ■ District Office



FINANCING 101



TRANSITION TO MIKE CLARK





SURVEY PROCESS



Community-wide Survey

- October 2020
- Mailed to every district household
- Take one of two easy ways
 - Complete online with unique access code
 - Return paper copy in prepaid postage paid envelope
- Responses remain anonymous
- Survey due by Nov. 2
- **YOU'RE INVITED:** Survey results shared at BOE Meeting on Nov. 16 at 6PM





NEXT STEPS



Continue In The Process

- **Survey Results**

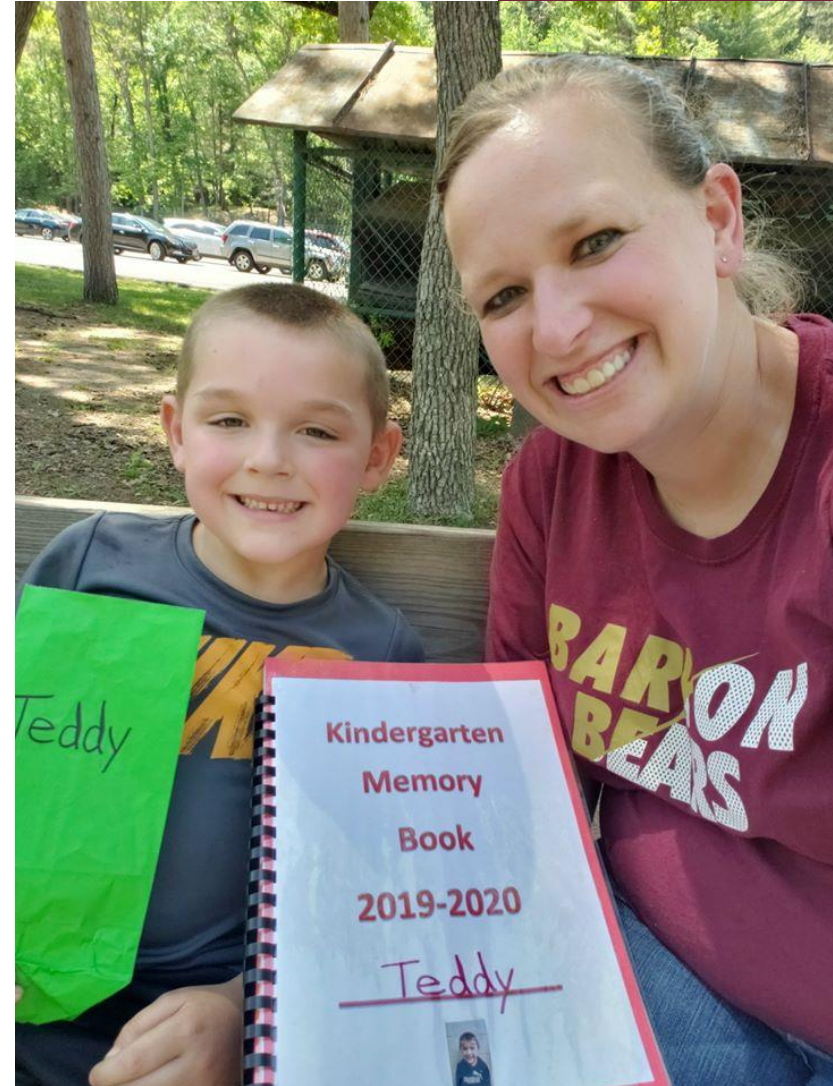
- Nov. 16 at 6PM

- **Alternative Analysis Meeting**

- Nov. 30 at 5:30PM, Woodland Elementary Commons

- December – Present Referendum Scope Recommendation to BOE

- January – District must adopt resolution by Jan. 25





THANK YOU
FOR YOUR PARTICIPATION





WE BACK THE BEARS!

Facility Planning Partners

- Construction Manager: Miron Construction
- Architect/Engineer: ISG
- Community Survey: School Perceptions
- Financial Advisor: R.W. Baird



A flyer titled "PROJECT TEAM" listing project partners. It features logos for Miron Construction, ISG, School Perceptions, and Barron Area School District. Each partner is represented by a headshot and a text block containing their name, title, LEED Green Associate status, phone numbers, and email address.

PROJECT TEAM

Miron Construction
Building Excellence

Andrew Daniels
Vice President, Business Development, Eau Claire Region
LEED Green Associate
319.298.5208
andrew.daniels@miron-construction.com

Kevin Hildebrandt
Facilities Management and Planning
P 507.387.6651
C 507.323.4322
kevin.hildebrandt@ISGinc.com

David Keating
Project Executive
LEED Green Associate
715.598.5710
david.keating@miron-construction.com

Kevin Bills, AIA
Architect
P 608.789.2034
C 608.518.7319
kevin.bills@ISGinc.com

Megan Prestebak
Education Specialist
LEED Green Associate
920.969.7334
megan.prestebak@miron-construction.com

Sue Peterson
Project Manager
P 262.644.4300 x7007
C 262.299.3177
speterson@schoolperceptions.com

Nic Sanderfoot
Conceptual Estimator
LEED Green Associate
715.598.5711
nic.sanderfoot@miron-construction.com

SCH06L PERCEPTIONS
Measuring what Matters

BARRON AREA SCHOOL DISTRICT

