

# Football

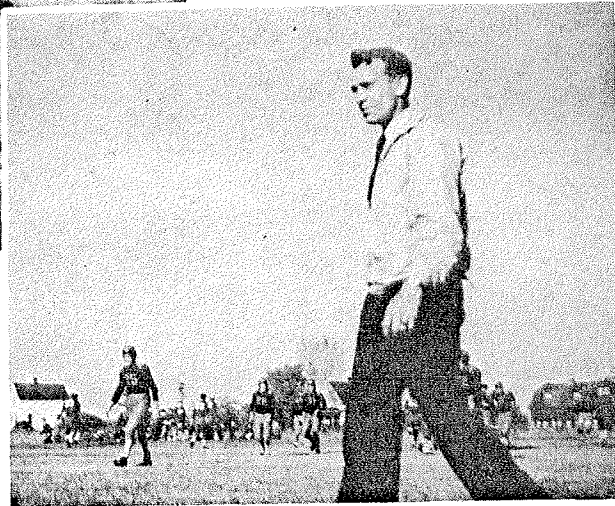
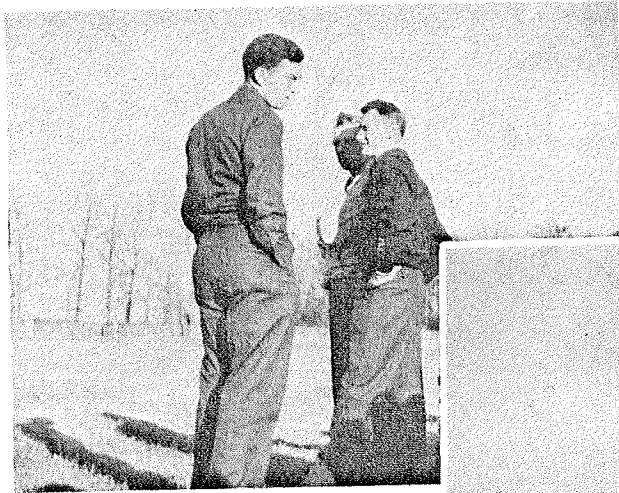
Our opening game of the season with Cumberland gave everyone the thrill they were waiting for. The game played at Cumberland on a cold, damp night was really the Bears' game from the beginning. Charlie Moltz and Frank McDonald skipped over the goal line for the Bears' two touchdowns, and we carried home our first victory of the season. The final score was 13-0. The second tilt of the season was on the Bears' home field. Our old rival, Rice Lake, was lined up against the Bears. The Bears were determined to win, and with this thought in mind, they made the first touchdown. However, the Blue and Gold scored a touchdown in the last quarter, and their kick point gave them a one point lead. The final score was 7-6. The Bears traveled to Spooner to play their third conference game. The game was a tough scrap with neither side willing to concede a yard. The Railroaders finally pushed over for a touchdown and handed us a 7-0 defeat. During this



*Top Row—L. to R.* R. Anderson, H. Akenson, M. Dennis, C. Dimick, H. Klinkenberg, C. Moltz, G. Akenson.  
*Middle Row—L. to R.* D. Krahenbuhl, F. McDonald, C. Dorsey, W. Peterson, S. Paulson, J. Salscheider.  
*Bottom Row—L. to R.* J. Anderson, W. Johnson, K. Byrnes, M. Berger, manager.  
*Not present:* M. Schullo, captain; H. Nevin.

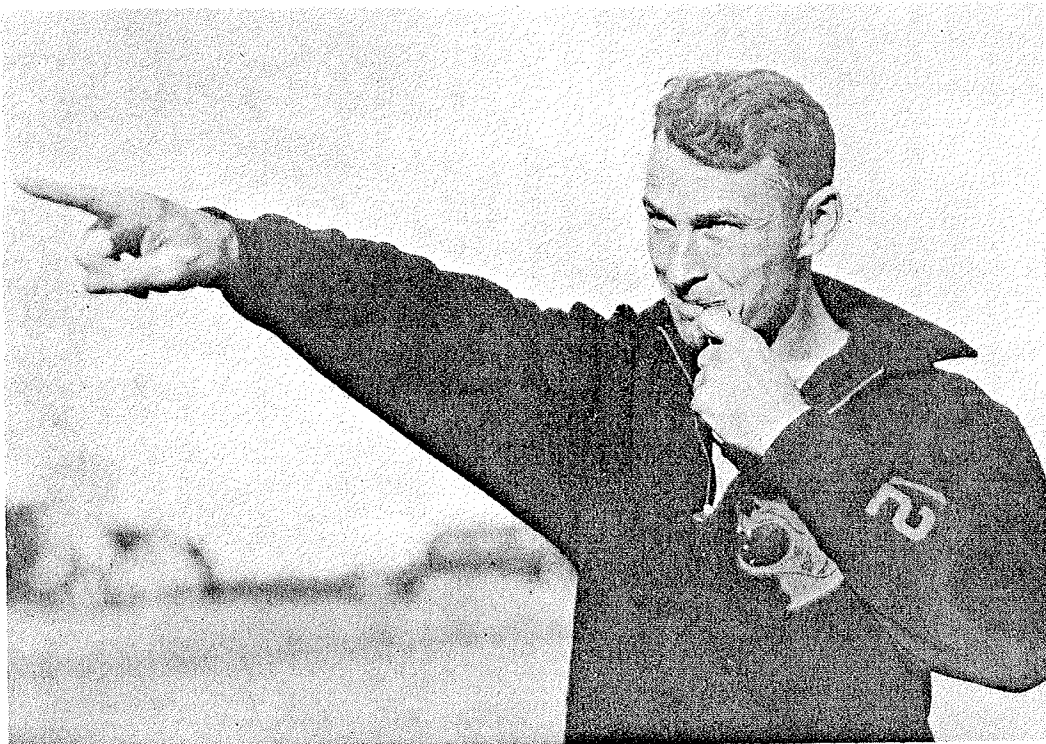
game, four of our players including Klinkenberg, Moltz, Akenson, and Iverson received injuries of some importance. The next game was with St. Pats of Eau Claire who journeyed here to play a non-conference game with the home boys. According to most critics, the game was one of the hardest-fought of the season. While a number of St. Pats' players received injuries, they went home with a 13-6 win. One of the most thrilling games of the season was that of our homecoming. Our opponents were the Orange and Black gridders from Bloomer. Anticipating a tough battle, the Bears were determined to upset Bloomer, one of the best teams in the conference. Although the Bears fought hard to hold the Orange and Blacks, they left us with a 7-0 defeat. The final game of the season was with the Lumberjacks at Ladysmith. While the Bears played a defensive game, they showed great spirit and fought hard for the Maroon and Gold. When the whistle blew at the end of the game, the score was 6-0 in favor of the Lumberjacks

Assistant Coach Clinger confers with Coach Derouin and Assistant Coach Switzenberg.

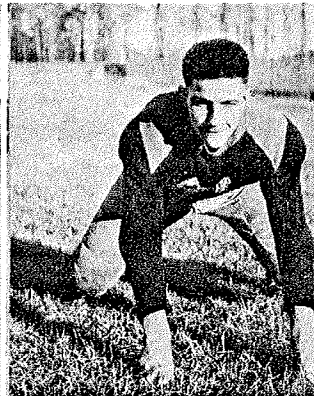
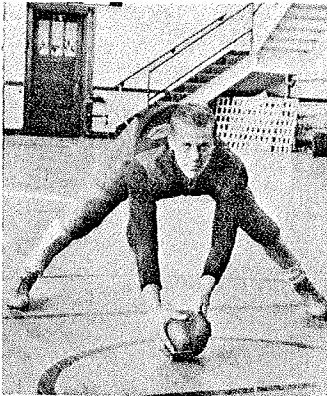
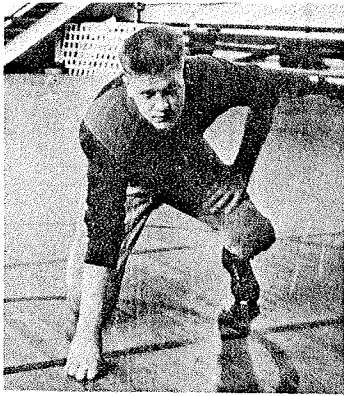


## Football

Assistant Coach Switzenberg snapped during the half at the Rice Lake game.



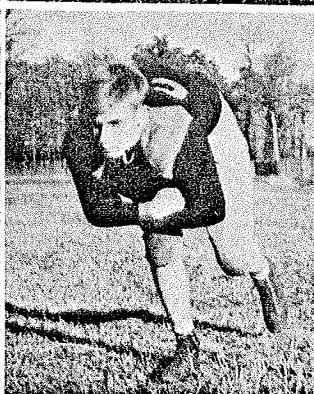
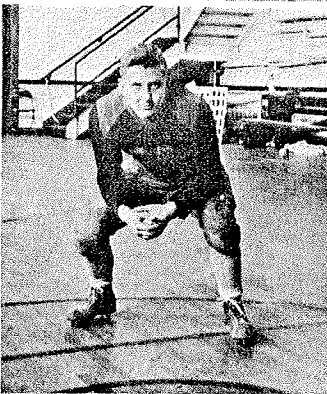
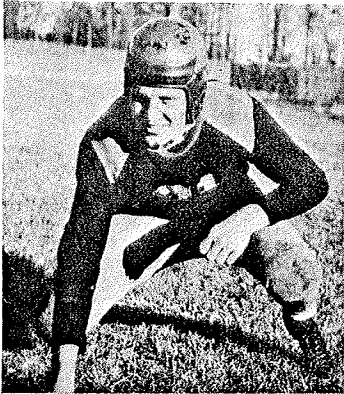
Coach Derouin blows his whistle to call the Bears out to practice.



"Pete" Peterson  
Guard  
Letterman

"Klink" Klinkenberg  
Center  
Letterman

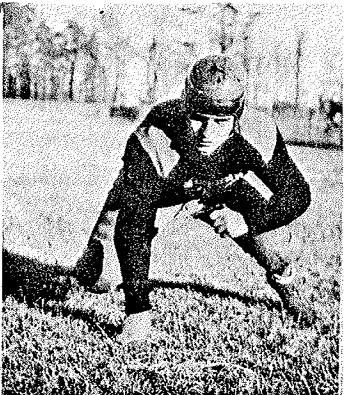
Milton Dennis  
Quarterback, Guard  
Letterman



"Red" Akenson  
Tackle  
Letterman

"Butch" Nevin  
Guard  
Letterman

"Charlie" Moltz -  
Left Halfback  
Letterman

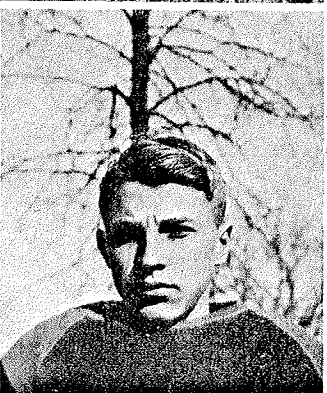
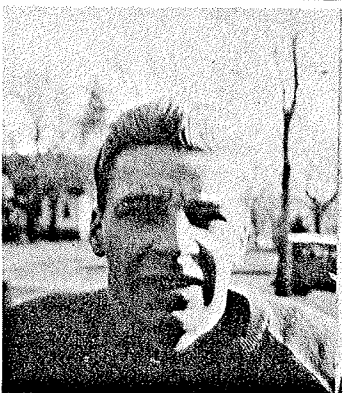


Mike Schullo  
Tackle  
Letterman—Captain

"Whitey" Paulson  
Center  
Letterman

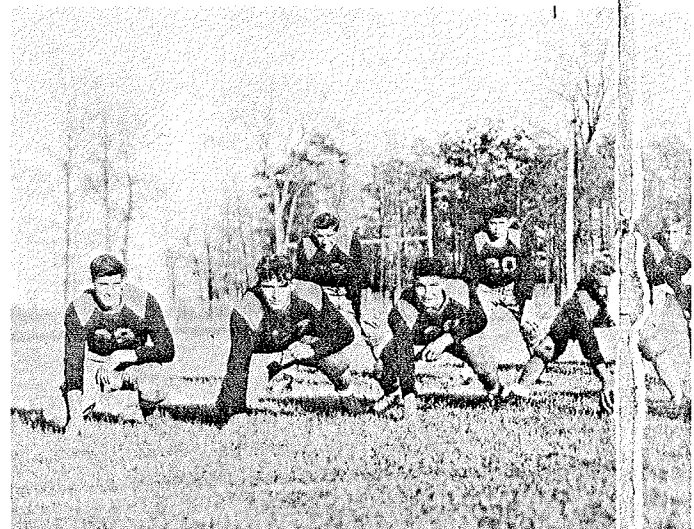
Starting Le

Top Row: W. Johnson, B. Iverson, C. M.  
Bottom Row: J. Salscheider, M. Schullo M.  
G. Akenson, C. Dimick.



Warren Johnson  
Quarterback  
Wing-back  
Letterman

Bob Anderson  
Guard  
Letterman



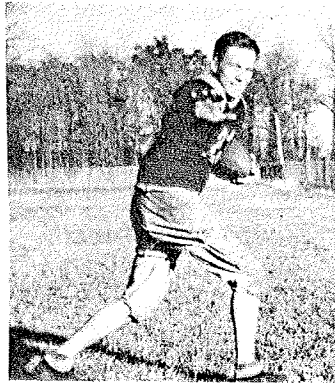
# Football

"Herbie" Akenson  
Tackle  
Letterman



"Charlie" Dorsey  
End  
Letterman

Frank McDonald  
Fullback and Halfback  
Letterman



Jim Anderson  
Right Halfback  
Letterman

Dick Kranhenbuhl  
Fullback  
Letterman

Jack Salscheider  
End  
Letterman

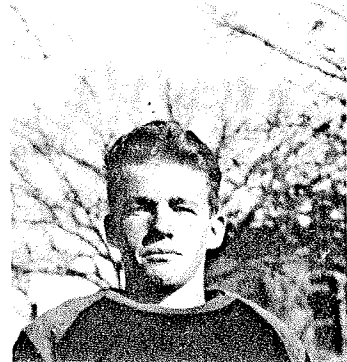
"Happy" Dimick  
End  
Letterman

Irving Anderson  
Tackle



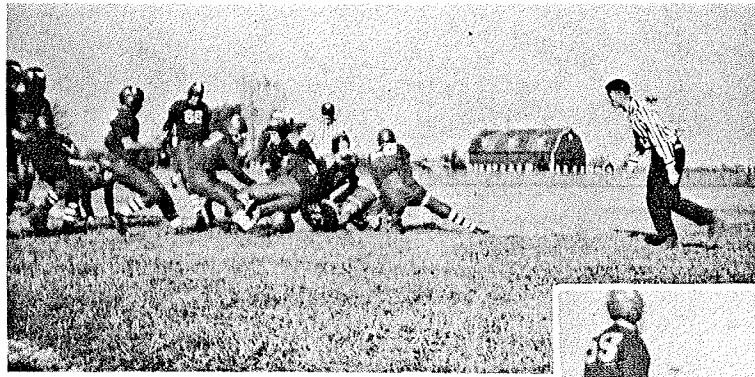
Level

Moltz, F. McDonald.  
M. Dennis, S. Paulson, W. Peterson.



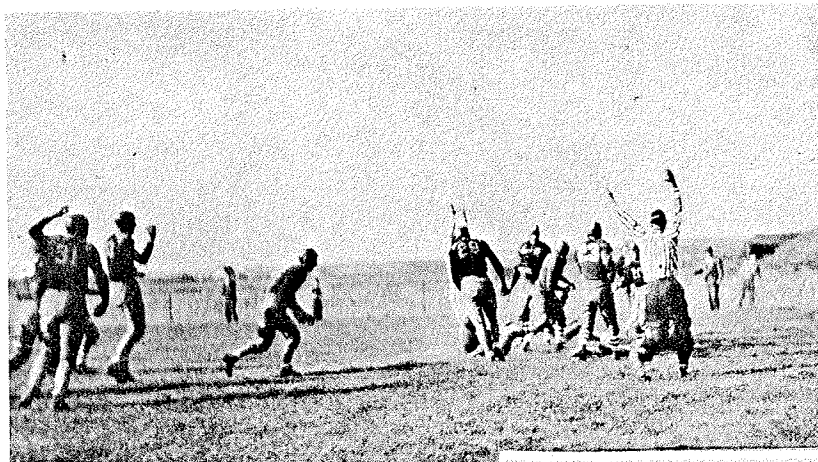
"Kenny" Byrnes  
Right Halfback  
Letterman

*Football*



The referee's whistle breaks it up in the game with St. Pats.

St. Pats' tackles stop a Barron end run.



The referee calls a Barron touchdown in the St. Pats game.

Coach primes Krahenbuhl to go into the St. Pats game.



# Football